

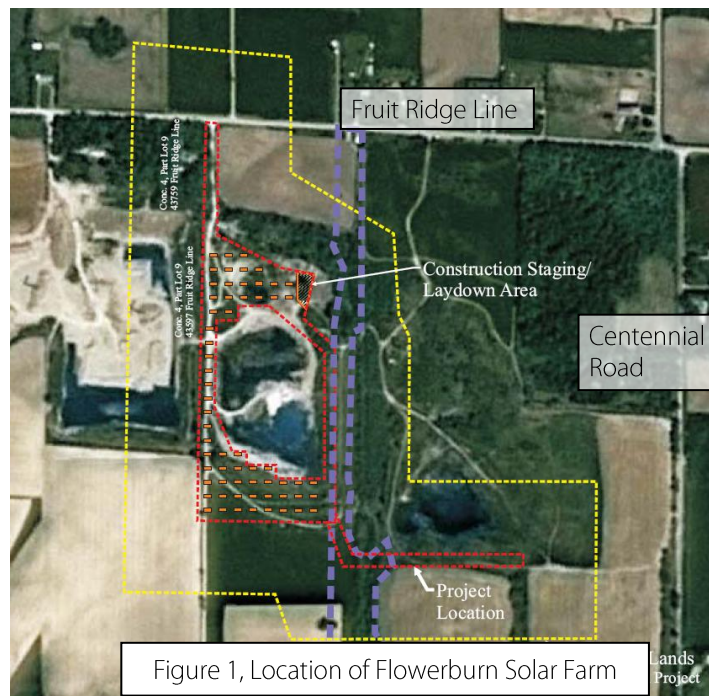
September 8, 2011

Ministry of Natural Resources
615 John Street North
Aylmer, ON N5H 2S8

Attention: Heather Riddell, Renewable Energy Approvals

**RE: Ontario Oil, Gas & Salt Resources Search Memo
Flowerburn Solar Farm – Injasuti Developments, 43777 Fruit Ridge Line (Part of Lot 9,
Concession 4, former Township of Yarmouth, Municipality of Central Elgin) (08220B)**

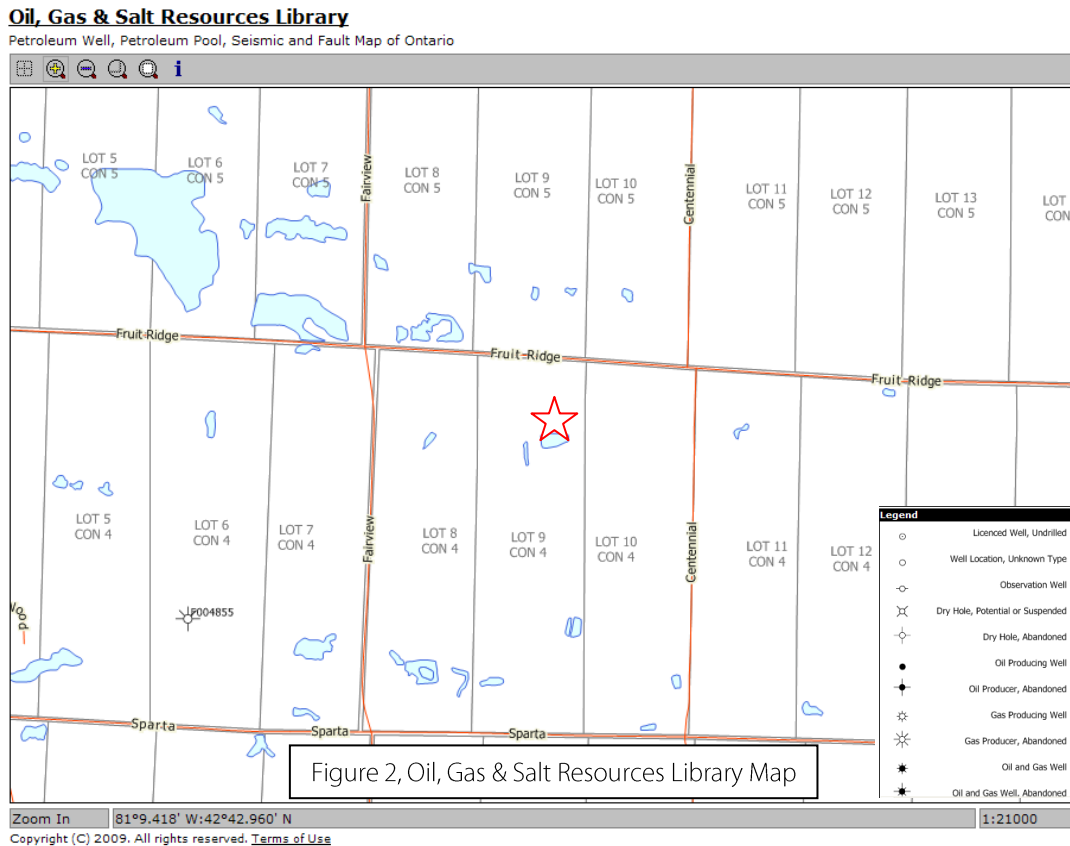
MHBC Planning was retained by Injasuti Developments to manage the Renewable Energy Act (REA) approvals process for a proposed photovoltaic (solar) electrical power generating facility, the Flowerburn Farm (Solar Farm). The Solar Farm is located on the south side of Fruit Ridge Line west of Centennial Road and located approximately 5 km southeast of St. Thomas and 5 km north of Lake Erie in southwestern Ontario. The Solar Farm will be spread across approximately 6.2 hectares (15.3 acres) of land located at the northern half of the property (see Figure 1 below).



As part of the NHA process as required under O.Reg. 359/09, documents have been created to provide direction into and including additional considerations that need to be addressed in the review of the renewable project sites. As outlined in the Approval and Permitting Requirements Document (APRD), issued 24 September 2009 by the Ontario Ministry of Natural Resources (MNR), consideration for

developments must include a search for Ontario oil, gas and salt resources. Review of these resources and proximity within 75 metres of the project components for active locations may require additional efforts and reporting to allow development of a site. Review of these resources is conducted by the Petroleum Resources Centre of the MNR.

A search of the Ontario Oil, Gas & Salt Resources on-line library (<http://www.ogsrlibrary.com>) in August 2011, indicates there are no current oil or gas wells present on the proposed Solar Farm property (see Figure 2 below).



A broader review of locations was also undertaken using the interactive mapping and there were no identified historical resources within 75 metres of the Flowerburn Solar Farm property. The closest historical record is located approximately 2 km southwest of the Flowerburn Solar Farm property and is identified as 'abandoned' (gas show).

Review and confirmation of this information is requested of the Petroleum Resources Centre of the MNR. If additional information is required pertaining to the location of the identified historical resource locations, please contact the undersigned.

Yours truly,

MHBC

David Aston, MSc, MCIP, RPP

C. Paul Marot