

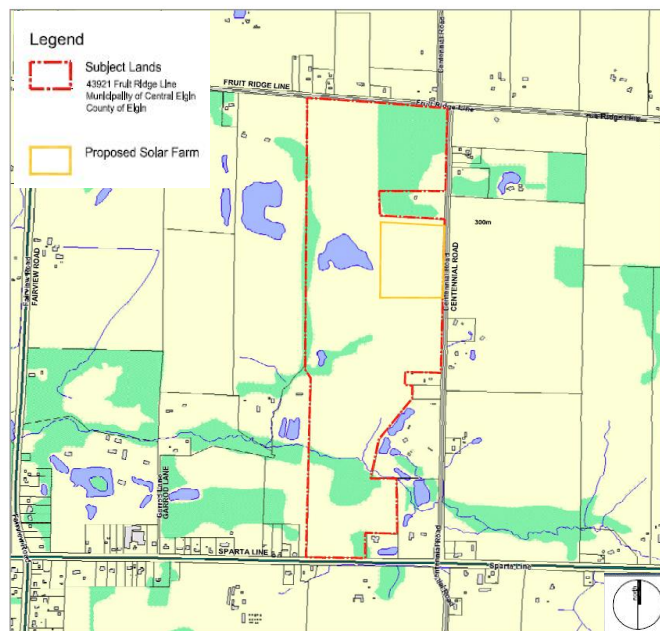
July 22, 2011

Ministry of Natural Resources
615 John Street North
Aylmer, ON N5H 2S8

Attention: Heather Riddell, Renewable Energy Approvals

**RE: Ontario Oil, Gas & Salt Resources Search Memo
Beaver Creek Solar Farm – Phase 1, Injasuti Developments, 43921 Fruit Ridge Line (Part of
Lot 10, Concession 4, former Township of Yarmouth, Municipality of Central Elgin)
(08220B)**

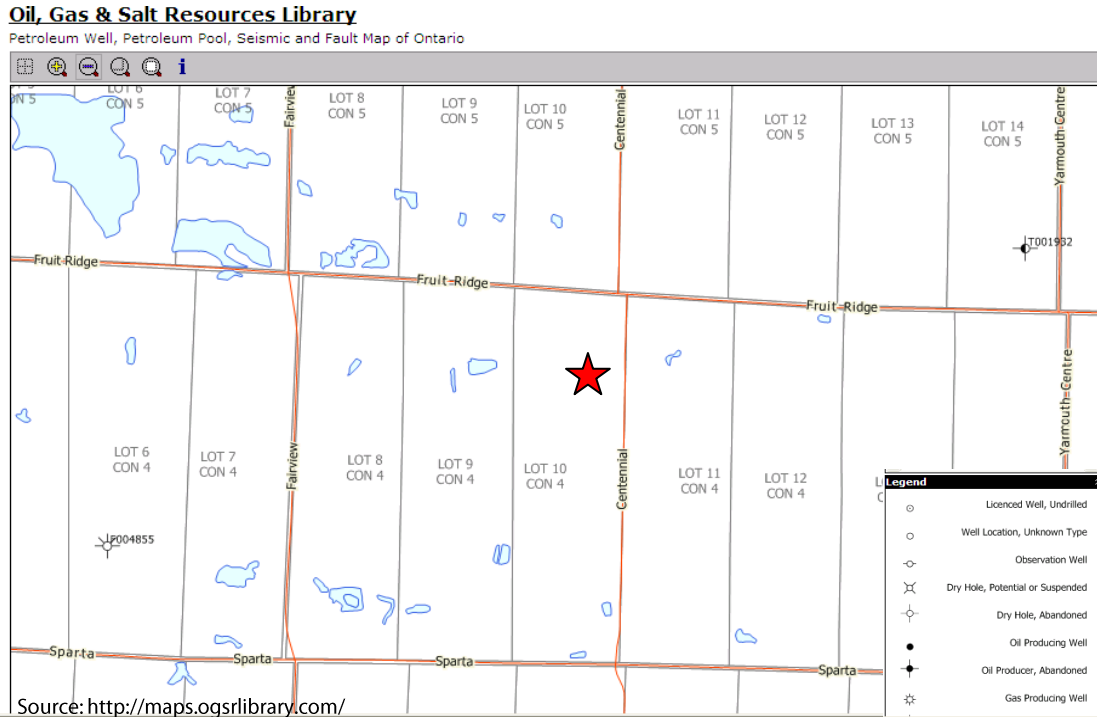
MHBC Planning was retained by Injasuti Developments to manage the Renewable Energy Act (REA) approvals process for a proposed photovoltaic (solar) electrical power generating facility, the Beaver Creek Solar Farm (Solar Farm). The Solar Farm is located at the southwest corner of Fruit Ridge Line and Centennial Road and located approximately 5 km southeast of St. Thomas and 5 km north of Lake Erie in southwestern Ontario. The Solar Farm property is approximately 65 ha (160 ac) in size and is currently in agricultural use (see Figure 1 below).



As part of the NHA process as required under O.Reg. 359/09, documents have been created to provide direction into and including additional considerations that need to be addressed in the review of the renewable project sites. As outlined in the Approval and Permitting Requirements Document (APRD),

issued 24 September 2009 by the Ontario Ministry of Natural Resources (MNR), consideration for developments must include a search for Ontario oil, gas and salt resources. Review of these resources and proximity within 75m of the project components for active locations may require additional efforts and reporting to allow development of a Site. Review of these resources is conducted by the Petroleum Resources Centre of the MNR.

A search of the Ontario Oil, Gas & Salt Resources on-line library (<http://www.ogsrlibrary.com>) in July 2011, indicates there are no current oil or gas wells present on the proposed Solar Farm property (see Figure 2 below).



A broader review of locations was also undertaken using the interactive mapping and there were no identified historical resources within 75m of the Solar Farm property. The closest historical records were located approximately 200 metres or greater from the Solar Farm property and both locations are identified as being 'abandoned'.

Review and confirmation of this information is requested of the Petroleum Resources Centre of the MNR. If additional information is required pertaining to the location of the identified historical resource locations, please contact the undersigned.

Yours truly,

MHBC

David Aston, MSc, MCIP, RPP

C. Paul Marot